



Artist's Impression Only

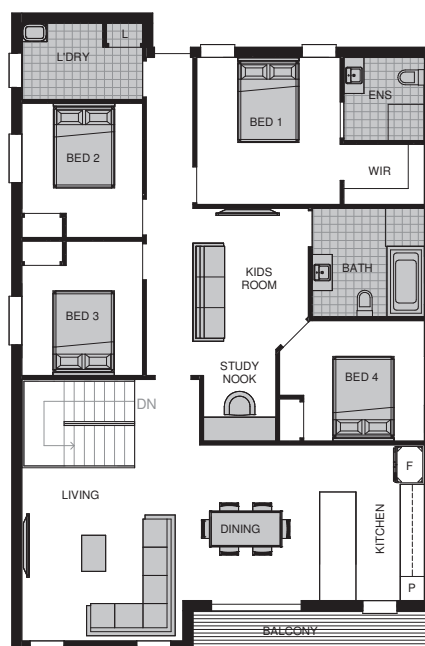
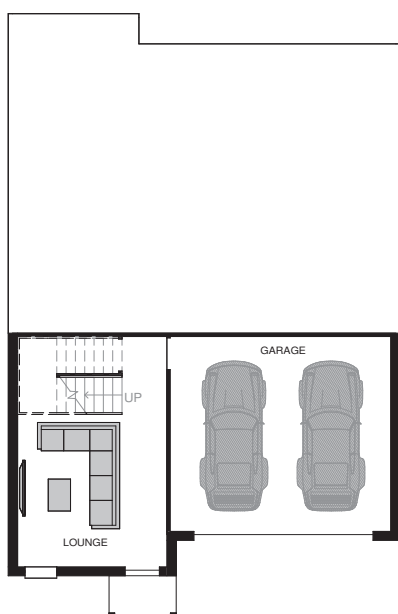
- Maximising bedroom and living spaces
- Open plan living
- Dining and kitchen area flow onto balcony
- Perfect for families who like to entertain.



### MINCOVE HOMES SALES TEAM

P: (02) 4243 8841 E: sales@mincove.com.au

Key



Disclaimer: All dimensions, floorplans and imagery depicted in this brochure are for illustrative purposes only and Mincove Homes reserves the right to implement required changes subject to the Cork's Hill subdivision, council approval and Mincove Home's design review panel.